

Air Traffic



Air Traffic in UK Airspace

The table and charts below have been compiled, with kind permission, from data in National Air Traffic Services' (NATS) Monthly Performance Reports. The reports are available from the NATS' Customer Website: <http://www.customer.nats.co.uk/>

Air Traffic

NATS: Traffic and Delays

Key:

ATMs: Air Traffic Movements handled by NATS (GAT).

vly: Change from corresponding period in the previous year.

CFMU: Average delay/flight as recorded by the Eurocontrol Central Flow Management Unit for NATS. Includes delays due to Air Traffic Control, airport congestion and weather.

NATS: Average delay/flight attributable to NATS.

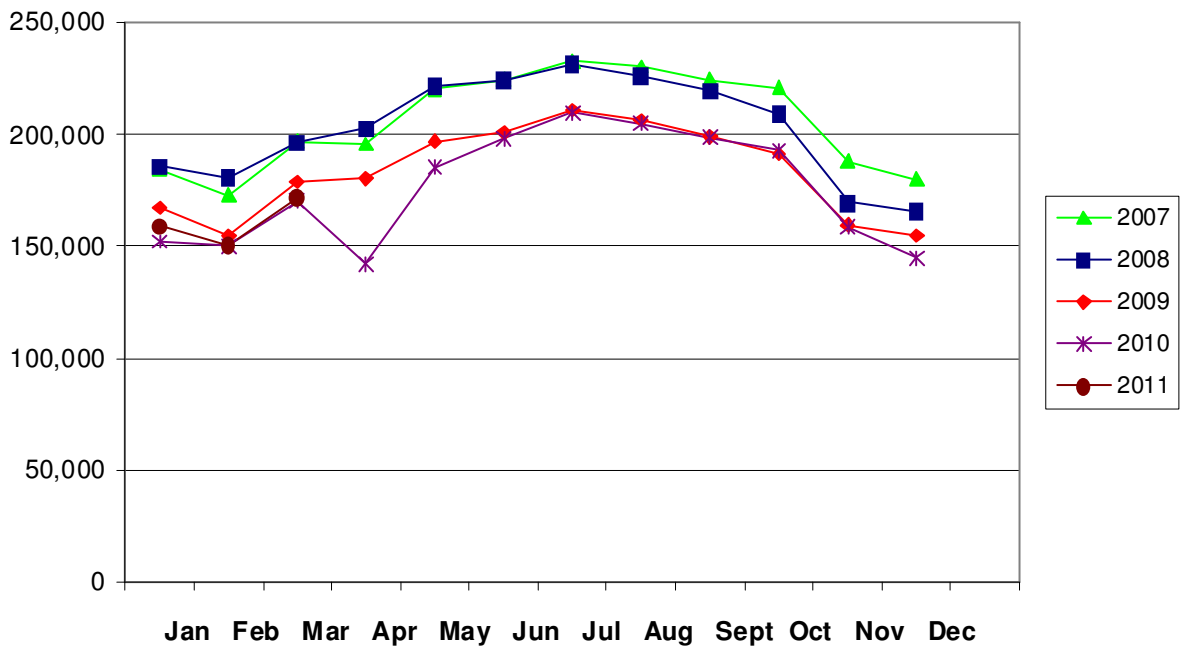
		ATMs	vly	Average delay per flight (secs)			
				CFMU	vly	NATS	vly
2007	Jan	184,018	3.73%	43.8	22.2	6.0	-0.6
	Feb	172,975	3.07%	45.6	10.8	11.4	-2.5
	Mar	196,869	4.07%	30.6	-12.0	7.4	-12.7
	Apr	195,593	4.16%	33.6	-5.4	14.3	-2.9
	May	220,317	3.32%	50.4	-2.4	21.1	2.7
	Jun	224,371	3.24%	123.0	57.0	41.0	2.0
	Jul	232,938	3.86%	113.4	27.6	35.6	3.2
	Aug	230,379	4.52%	62.4	-10.2	31.0	-1.0
	Sep	224,454	2.99%	80.4	1.2	49.0	8.3
	Oct	220,922	3.93%	80.4	-7.8	37.7	5.1
	Nov	188,015	2.59%	55.2	14.4	16.7	1.5
	Dec	180,089	3.00%	82.8	-31.8	7.3	-0.3
2008	Jan	185,885	1.01%	89.4	45.6	10.6	4.6
	Feb	180,737	4.49%	71.4	25.8	16.5	5.1
	Mar	196,304	-0.29%	61.2	30.6	22.4	15.0
	Apr	202,691	3.63%	72.6	39.0	18.8	4.5
	May	221,885	0.71%	74.4	24.0	27.7	6.6
	Jun	224,375	0.00%	84.6	-38.4	43.6	2.6
	Jul	231,537	-0.60%	77.4	-36.0	31.8	-3.8
	Aug	226,262	-1.79%	60.0	-2.4	26.6	-4.4
	Sep	219,742	-2.10%	79.2	-1.2	35.6	-13.4
	Oct	209,284	-5.27%	36.0	-44.4	9.5	-28.2
	Nov	169,539	-9.83%	19.2	-36.0	1.1	-15.6
	Dec	165,705	-7.99%	33.0	-49.8	4.8	-2.5
2009	Jan	167,322	-9.99%	52.2	-37.2	3.3	-7.3
	Feb	154,535	-14.50%	38.4	-33.0	4.9	-11.6
	Mar	178,747	-8.94%	15.6	-45.6	2.9	-19.5
	Apr	180,166	-11.11%	24.6	-48.0	1.6	-17.2
	May	196,806	-11.30%	19.2	-55.2	3.8	-23.9
	Jun	200,914	-10.46%	32.4	-52.2	9.0	-34.6
	Jul	210,844	-8.94%	51.6	-25.8	9.3	-22.5
	Aug	206,376	-8.79%	13.6	-46.4	5.8	-20.8
	Sep	199,143	-9.37%	16.2	-63.0	7.1	-28.5
	Oct	191,160	-8.66%	9.6	-26.4	2.5	-7.0
	Nov	159,428	-5.96%	35.4	16.2	0.5	-0.6
	Dec	154,885	-6.53%	41.4	8.4	1.6	-3.2
2010	Jan	152,066	-9.12%	48.0	-4.2	1.4	-1.9
	Feb	150,006	-2.93%	15.6	-22.8	3.7	-1.2
	Mar	170,231	-4.76%	6.0	-9.6	2.4	-0.5
	Apr	141,956	-21.21%	19.8	-4.8	1.8	0.2
	May	185,270	-5.86%	31.2	12.0	2.4	-1.4
	Jun	198,063	-1.42%	17.4	-15.0	4.9	-4.1
	Jul	209,635	-0.57%	35.4	-16.2	13.4	4.1
	Aug	204,743	-0.79%	21.6	8.0	6.7	0.9
	Sep	198,514	-0.32%	21.0	4.8	3.1	-4.0
	Oct	192,958	0.94%	33.0	23.4	1.6	-0.9
	Nov	158,559	-0.55%	41.4	6.0	0.4	-0.1
	Dec	144,688	-6.58%	84.0	42.6	1.4	-0.2

Air Traffic

2011	Jan	159,075	4.61%	14.4	-33.6	1.8	0.4
	Feb	150,811	0.54%	30.0	14.4	9.2	5.5
	Mar	171,878	0.97%	16.8	10.8	2.2	-0.2

Source: NATS Monthly Performance Reports

Air Traffic Movements



Air Traffic

Average Delay per Flight (NATS Attributable) (secs)

